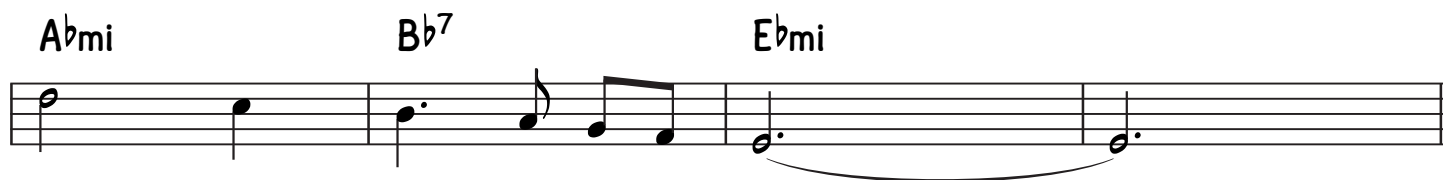
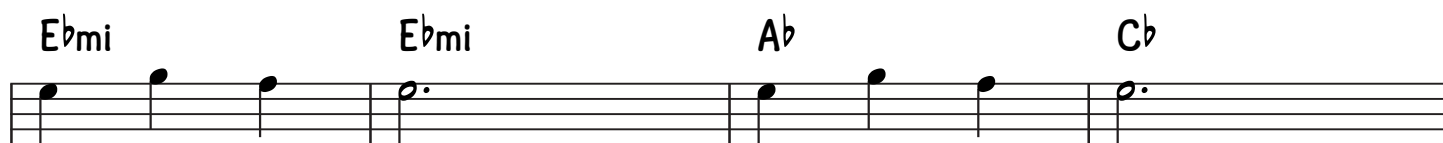


BALLAD**Kol B'romoh****INTRO**

B

E^bmi E^b7 A^bmi A^bmi

1. E^bmi/B^b B^b7 E^bmi B^b

2. E^bmi/B^b B^b7 E^bmi $J=J.$ E^bmi

$\frac{12}{8}$

MARCH FEEL

C

E^bmi A^bmi D^b7 G^b

C^b A^bmi B^b7 E^bmi

E^bmi A^bmi D^b7 G^b

C^b A^bmi B^b7 E^bmi

